

Setup Guide

www.audioengineusa.com



 audioengine **5**

Important Safety Instructions

- Read these instructions for all components before using this product.
- Keep these instructions for future reference.
- Heed all warnings on the product and in the owner guide.
- Follow all instructions.
- Do not use this apparatus near water or moisture. Do not use this product near a bathtub, washbowl, kitchen sink, laundry tub, in a wet basement, near a swimming pool, or anywhere else that water or moisture are present.
- Clean only with a dry cloth and as directed by the manufacturer. Unplug this product from the wall outlet before cleaning.
- Do not block any ventilation openings. Install in accordance with the manufacturer instructions. To ensure reliable operation of the product and to protect it from overheating, put the product in a position and location that will not interfere with its proper ventilation. For example, do not place the product on a bed, sofa, or similar surface that may block the ventilation openings. Do not put it in a built-in system, such as a bookcase or a cabinet that may keep air from flowing through its ventilation openings.
- Do not install near any heat sources, such as radiators, heat registers, stoves or other apparatus that produce heat.
- Protect the power cord from being walked on or pinched, particularly at plugs, convenience receptacles, and the point where they exit from the apparatus.
- Only use attachments or accessories specified by the manufacturer.
- Use only with the cart, stand, tripod, bracket or table specified by the manufacturer or sold with the apparatus. When a cart is used, use caution when moving the cart/apparatus combination to avoid injury from tip-over.
- Unplug this apparatus during lightning storms or when unused for long periods of time to prevent damage to this product.
- Refer all servicing to qualified service personnel.
- Servicing is required when the apparatus has been damaged in any way such as power supply cord or plug is damaged; liquid has been spilled or objects have fallen into the

apparatus ;the apparatus has been exposed to rain or moisture, does not operate normally, or has been dropped. Do not attempt to service this product yourself. Opening or removing covers may expose you to dangerous voltages or other hazards. Please contact the manufacturer to be referred to an authorized service center near you.

- To prevent risk of fire or electric shock, avoid over loading wall outlets, extension cords, or integral convenience receptacles .
- Do not let objects or liquids enter the product as they may touch dangerous voltage points or short out parts that could result in a fire or electric shock.
- See product enclosure bottom for safety related markings.
- Use Proper Power Sources. Plug the product into a proper power source, as described in the operating instructions or as marked on the product.
- Avoid power lines Use extreme care when installing an outside antenna system to keep from touching power lines or circuits, as contact with them may be fatal. Do not install external antennas near overhead power lines or other electric light or power circuits, nor where an antenna can fall into such circuits or power lines.

This device complies with part 15 of the FCC Rules. Operation is subject to the following two conditions: This device may not cause harmful interference and this device must accept any interference received, including interference that may cause undesired operation.

“⚡” This symbol means that this unit is double insulated. An earth connection is not required.



Contents

Introduction/Unpacking/Contents	P1-2
Features/Placement/Box contents	P3-5
Connecting Your System	P6-12
Troubleshooting	P13
Warranty Info	P14
Specifications	P15

Introduction

Welcome to the Audioengine family and congratulations on your purchase! This product was designed and built by our in-house development team and is backed with a 3-year warranty. We had a blast making these speakers and hope they bring you many years of enjoyment.

Unpacking

Your Audioengine speakers were carefully tested and inspected before packaging and shipping. After unpacking please check for any damage. It is rare that a unit is damaged during shipping, but if this does happen contact the shipping company immediately. We recommend that you keep the original carton and packing material for future shipping.

Recommended Speaker Setup

It is true that proper speaker placement has a huge impact on sound quality. There are many different theories, but all rooms and tastes are different so it's impossible to specify a correct placement. We do suggest you experiment with a few different locations to see what works for you.

As a general rule of thumb for the best soundstage balance, the speakers should be equi-distant from side walls and a different distance from rear walls. For the best bass response on Audioengine 5, we recommend that you keep a minimum distance of 6-12" between the rear of the speakers and the rear wall. For height, position the speakers with the tweeters at eye level of your most common listening position.

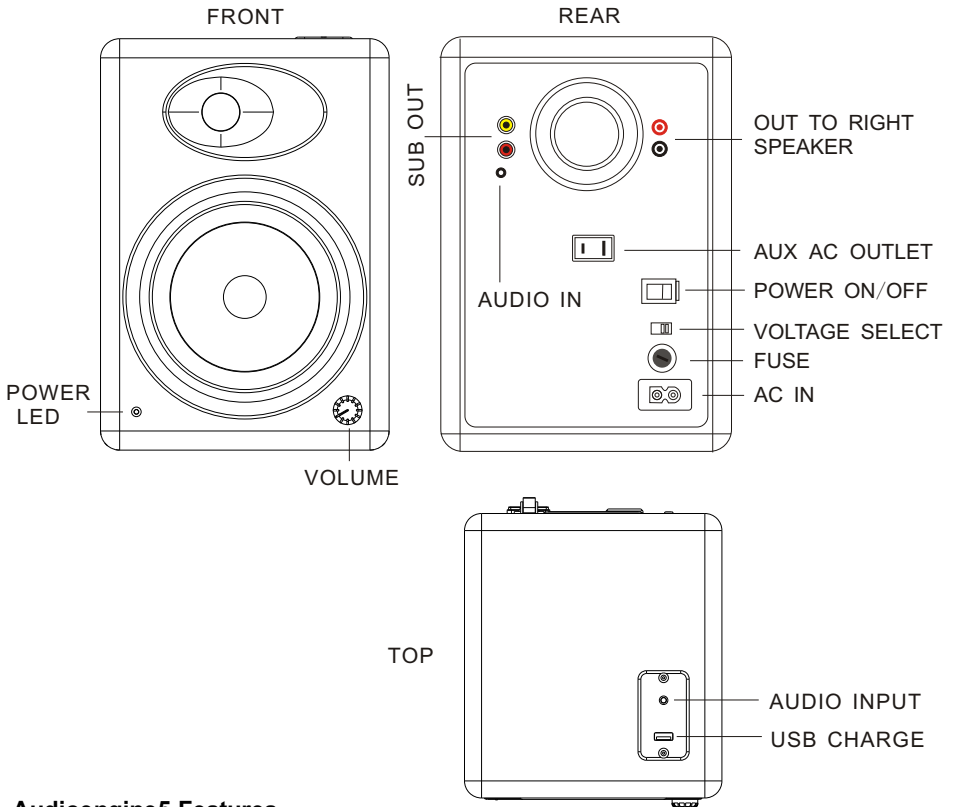
Speaker Conditioning and Break-in

Although a break-in period is not required, we recommend that you play between 24 to 48 hours of music through the speakers before doing any critical listening or speaker placement. Just set your iPod to "Repeat All" and adjust the volume to normal listening level. You can check out all that old stuff in your library and your neighbors will absolutely love you for it.

Speaker Cleaning

We don't recommend using any solvents or cleaners on Audioengine cabinets or speakers. Just wipe down with a soft, dry cloth.

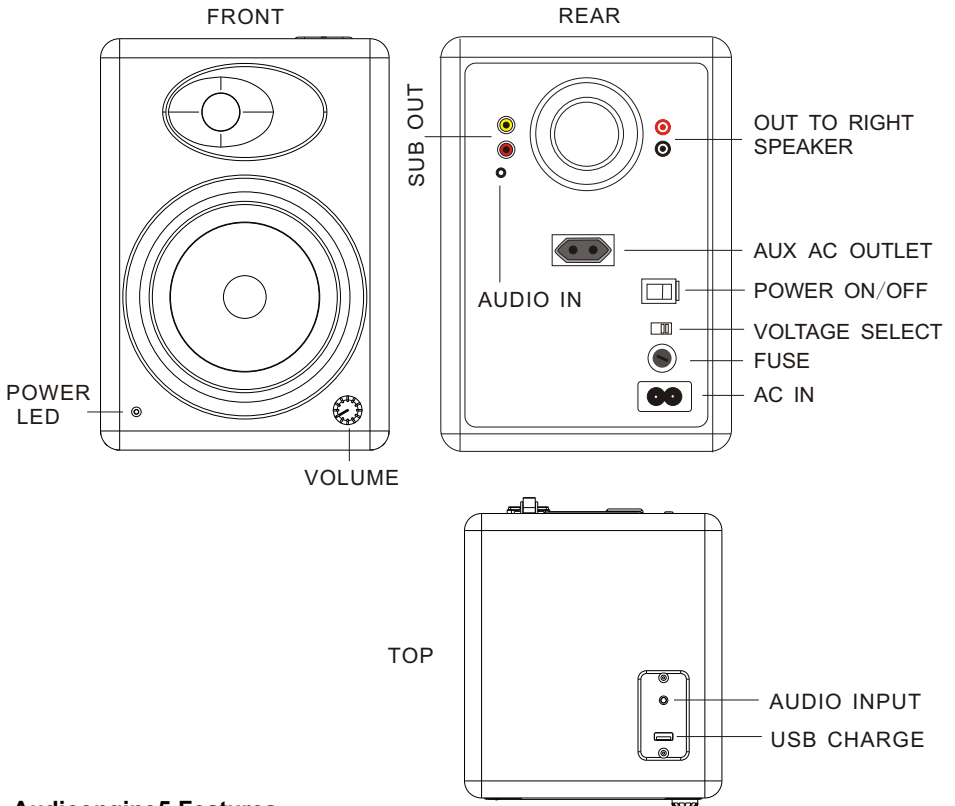
LEFT SPEAKER (US Type)



Audioengine5 Features

- iPod power charging port (Combo Port)
- 2 audio inputs
- Built-in power amplifier, no receiver needed
- Power outlet for Airport Express
- Front panel volume control
- Custom Kevlar woofers for super low end
- Silk dome tweeters for smooth highs
- Subwoofers outputs
- High-quality speaker binding posts
- Hand-built cabinets w/high-gloss finish
- Magnetically shielded
- 3 year transferable warranty
- Auto-sleep power-saving mode
- All cables included

LEFT SPEAKER (EU Type)



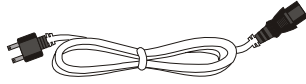
Audioengine5 Features

- iPod power charging port (Combo Port)
- 2 audio inputs
- Built-in power amplifier, no receiver needed
- Power outlet for Airport Express
- Front panel volume control
- Custom Kevlar woofers for super low end
- Silk dome tweeters for smooth highs
- Subwoofers outputs
- High-quality speaker binding posts
- Hand-built cabinets w/high-gloss finish
- Magnetically shielded
- 3 year transferable warranty
- Auto-sleep power-saving mode
- All cables included

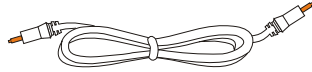
Box Contents

Included Accessories

- AC power cable



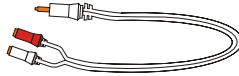
- 1/8" audio cable, 2 meters (~6.5ft)



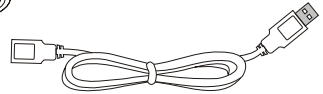
- (2) 1/8" audio cables, 20cm (~8")



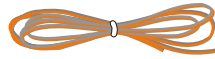
- 1/8" to RCA "Y" cable



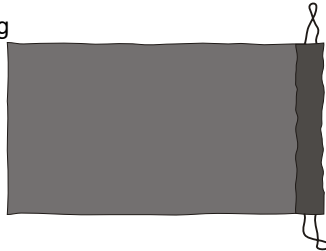
- USB power extender cable, 1 meter (~3.28ft)



- Speaker wire (16AWG), 3.75 meters (~12.3ft)

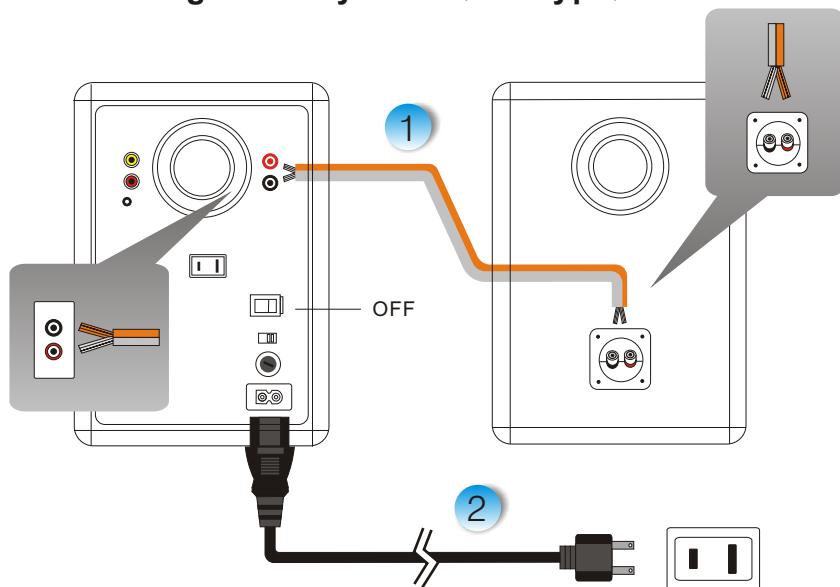


- Drawstring cable bag



- Drawstring speaker bags
- (2) High-density foam protectors/sonic isolation pads
- Setup Guide

Connecting Your System (US Type)



1 Step 1 – SPEAKER WIRE CONNECTION

Connect the **RED (+)** and **BLACK (-)** terminals from the left speaker to the corresponding terminals on the right speaker using the included speaker wire. Be sure to match the gold-colored side of the speaker wire with the **RED (+)** terminals and the silver-colored side to the **BLACK (-)** terminals on each speaker.

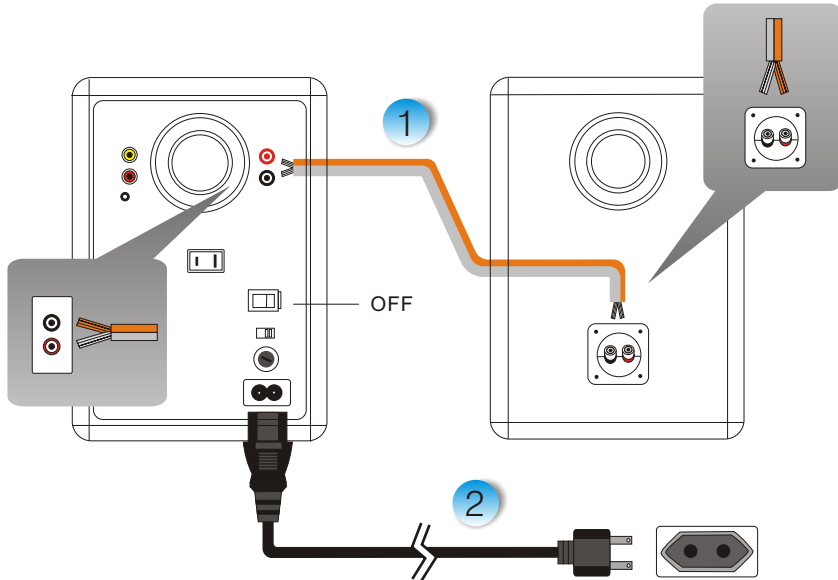
Note: As the Audioengine 5 speaker system is self-powered, do not connect the speaker terminals to the speaker outputs of a stereo receiver.

Detailed procedure:

- Remove the pre-cut insulation on the end of the speaker wire and twist the exposed wire strands 2-3 times.
- Use your thumb and finger to the unscrew the binding post connector.
- Insert each speaker wire into the holes on the side of binding post connector.
- Retighten the binding posts. The stripped wire portion should be secured firmly in the connector.

Repeat the procedure to connect the other end of the speaker wire to the other speaker. Be sure to match the wire color to the same terminal color on each speaker. Also make sure that none of the speaker wire strands have come in contact with an adjoining terminal.

Connecting Your System (EU Type)



1 Step 1 – SPEAKER WIRE CONNECTION

Connect the **RED (+)** and **BLACK (-)** terminals from the left speaker to the corresponding terminals on the right speaker using the included speaker wire. Be sure to match the gold-colored side of the speaker wire with the **RED (+)** terminals and the silver-colored side to the **BLACK (-)** terminals on each speaker.

Note: As the Audioengine 5 speaker system is self-powered, do not connect the speaker terminals to the speaker outputs of a stereo receiver.

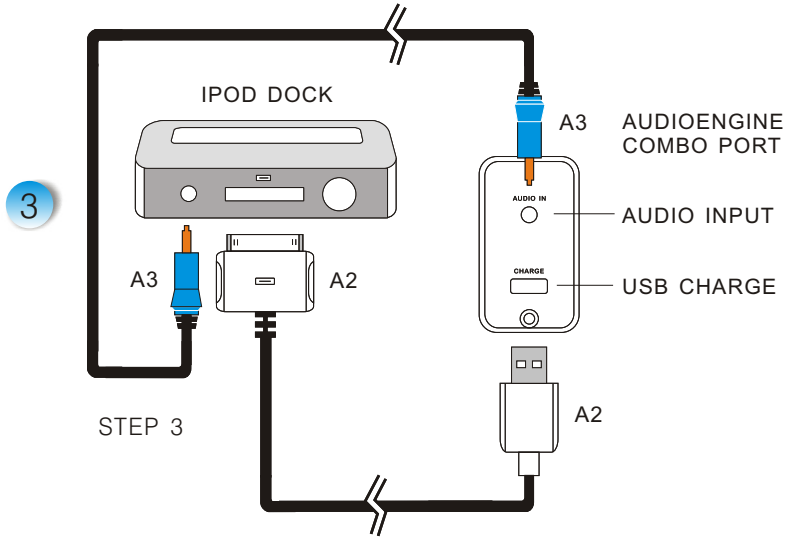
Detailed procedure:

- Remove the pre-cut insulation on the end of the speaker wire and twist the exposed wire strands 2-3 times.
- Use your thumb and finger to the unscrew the binding post connector.
- Insert each speaker wire into the holes on the side of binding post connector.
- Retighten the binding posts. The stripped wire portion should be secured firmly in the connector.

Repeat the procedure to connect the other end of the speaker wire to the other speaker. Be sure to match the wire color to the same terminal color on each speaker. Also make sure that none of the speaker wire strands have come in contact with an adjoining terminal.

2 Step 2 – POWER CABLE CONNECTION

- Verify that the power switch on the rear panel is in the OFF position.
- Verify that the voltage selector switch is set to the proper voltage for your area.
- Connect the power cord into the left speaker and the other end into the wall outlet.



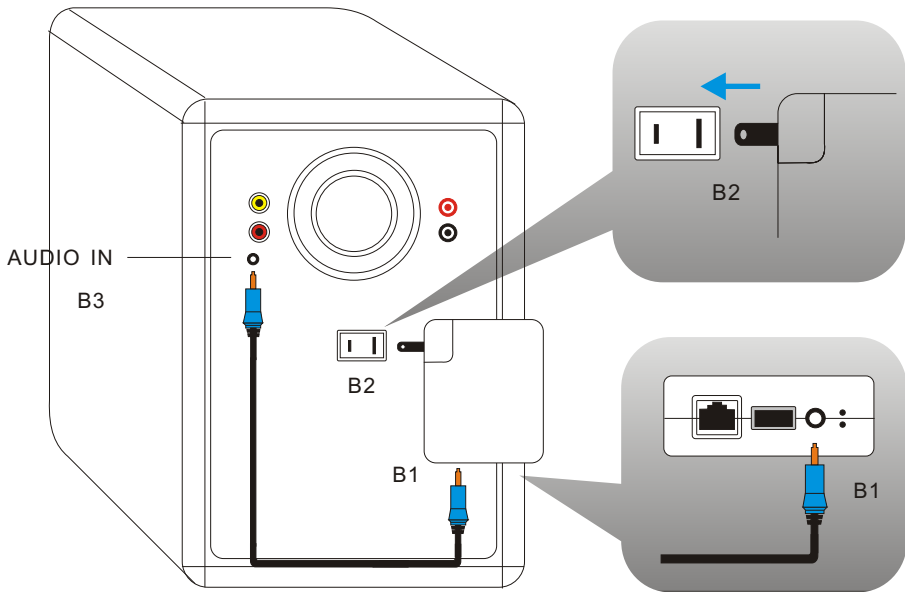
3 Step 3 – AUDIO CONFIGURATIONS

The following configurations show the most common audio setups for Audioengine 5.

Configuration A (for use with iPod Universal Dock):

- A1. Place the dock on top of the left speaker. We highly recommend using the Apple Universal Dock with remote control.
- A2. Connect the Apple 30-pin cable from the dock to USB jack on the speaker top Combo Port.
- A3. Connect one of the included 1/8" mini-jack audio cables from the dock to AUDIO IN jack on the top Combo Port.
- A4. Turn rear panel power switch ON and verify that the blue LED lights up on the speaker front panel.

Insert your iPod and set volumes on the front panel and iPod as desired.

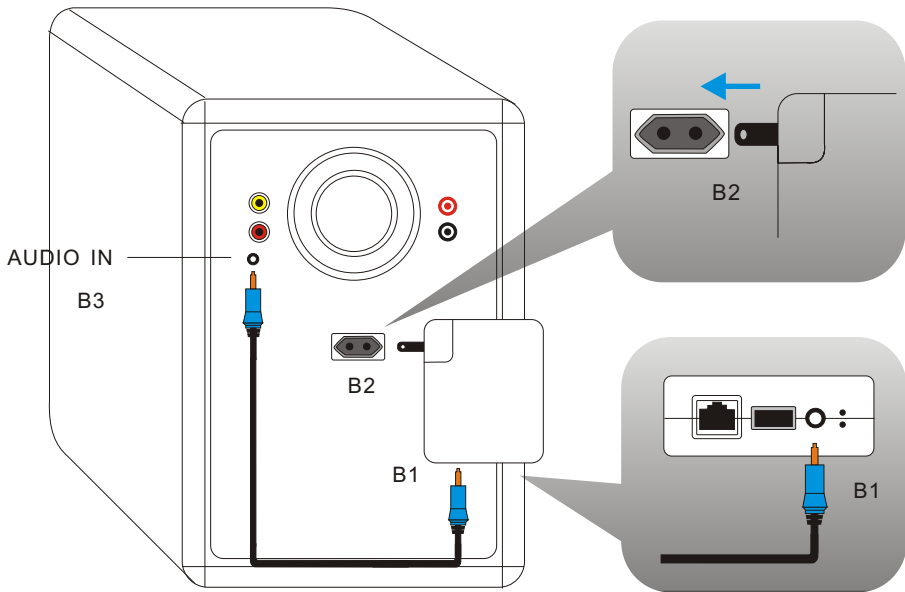


(US Type)

Configuration B (for use with Airport Express and iTunes):

- B1. Plug one end of the short 1/8" audio cables into your Airport Express audio output.
- B2. Plug Airport Express into the AUX OUTLET on the left speaker rear panel.
- B3. Plug the other end of the 1/8" audio cable into AUDIO IN jack in rear of left speaker.

Select your speakers from iTunes on your computer and set volume levels as desired.

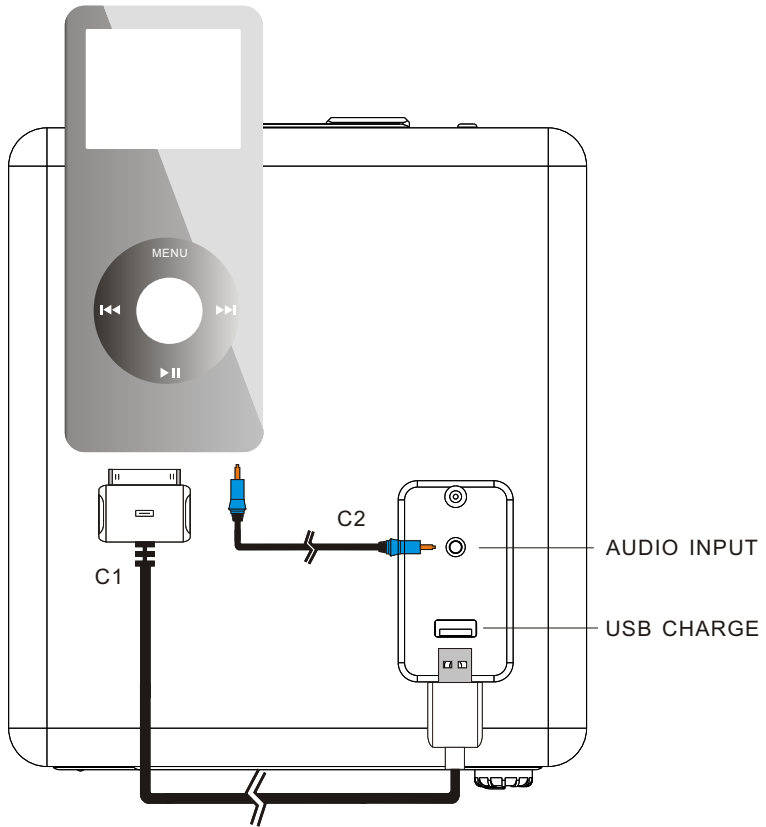


(EU Type)

Configuration B (for use with Airport Express and iTunes):

- B1. Plug one end of the short 1/8" audio cables into your Airport Express audio output.
- B2. Plug Airport Express into the AUX OUTLET on the left speaker rear panel.
- B3. Plug the other end of the 1/8" audio cable into AUDIO IN jack in rear of left speaker.

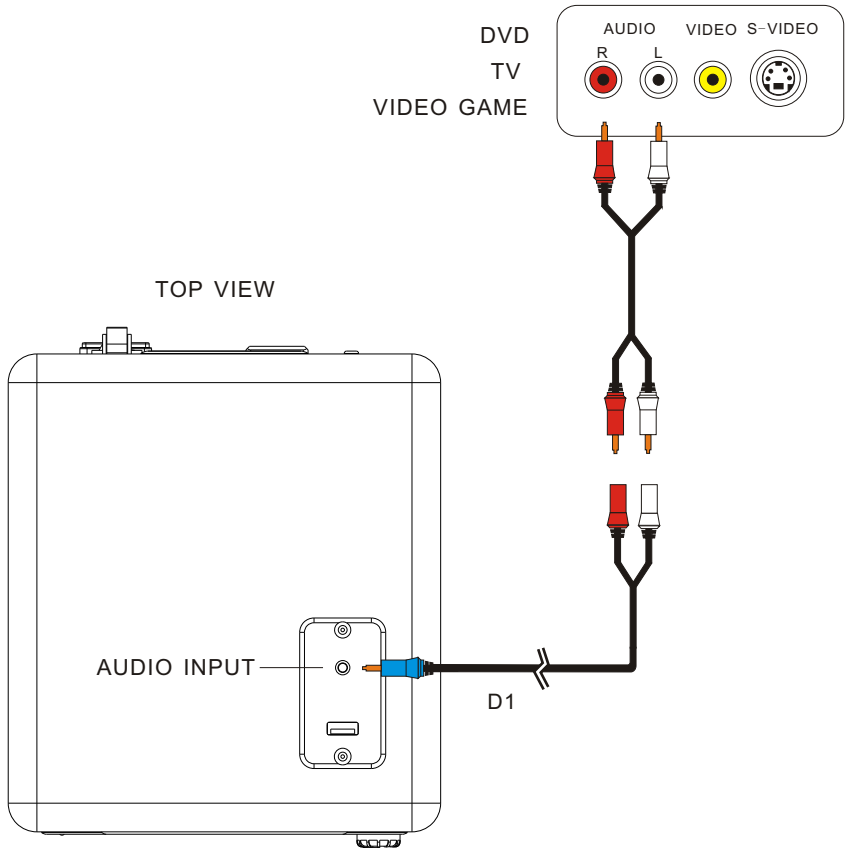
Select your speakers from iTunes on your computer and set volume levels as desired.



TOP VIEW

Configuration C (for use with iPod):

- C1. For charging your iPod while playing, connect the 30-pin cable from the iPod to USB jack on the Combo Port. Use the included USB extender cable if extra cable length is needed (for use on a desktop, for example).
- C2. Connect the long 1/8" mini-jack audio cable from iPod headphone jack to the AUDIO IN jack on the Combo Port.



Configuration D (all products with 1/8" or RCA outputs):

- D1. Connect the 1/8" mini-jack audio cable from 1/8" output to the AUDIO IN jack on the Combo Port (or rear panel) – or use the included RCA to 1/8" Y adapter for components with RCA L/R audio outputs.

Note that most newer TV remotes can control the Audioengine speaker volume if connected to variable TV audio out.

Basic Troubleshooting

If the front panel LED does not light up, check...

- that the AC power cord is firmly plugged into the rear panel and wall outlet.
- to make sure the speaker rear panel power switch is ON.
- that the speaker is getting power from the wall outlet.
- that the rear panel voltage selector is matched to the operating voltage.
- the fuse in the AC IN on the rear panel. If the fuse needs to be replaced it is extremely important to replace only with same fuse type and value.

If no sound output, check...

- that the speaker is turned on (blue LED illuminated)
- to make sure the right speaker is connected correctly to the left.
- that the volume on the speaker front panel is not all the way down.
- the volume level on the iPod or other audio source.
- to make sure the iPod audio cable is inserted all the way at both ends and the iPod is seated in the dock correctly.

If bass output is low, check...

- speaker wire polarity (verify that wires are going to same terminals on both speakers).
- that the speaker placement is not too close to a wall or other obstruction.
- that the bass ports on the rear panels are not blocked by a rodent or jelly sandwich.

If no output from right speaker, check...

- that the speaker wire is properly connected from the left to right. Check by removing the speaker wire from both terminals on each speaker and reconnecting.

Support

If you have an issue that needs help to resolve, contact us by email at:

support@audioengineusa.com

We always seem to be on the road so you can also Skype us at:
audioengine_support

Audioengine Warranty

All Audioengine speakers have a 3-year warranty on parts and labor from date of purchase. Your warranty is automatic, so there is no need to register.

What is covered

All defective parts or faulty workmanship.

What is not covered

The warranty does not cover damage caused by accident, misuse, abuse, neglect, lightning, power surges, other acts of nature, unauthorized product modification or repairs, or failure to follow the instructions outlined in the Setup Guide.

What we will do

We will repair or replace any defective parts within a reasonable amount of time and free of charge any time during the warranty period. After service, we will be responsible for shipping the product back to you at our expense.

What we ask from you

You will be responsible for shipping or transportation charges to us. We recommend that you keep the original shipping materials, as it is important that you package the product so that it will not be damaged during shipping. Audioengine cannot be responsible for any damages incurred during shipping due to poor packing, so please pack well and make sure to insure your shipment.

How to obtain Audioengine Warranty service

If you have any questions about your warranty coverage, need help, or you think you may need service, email the Audioengine Authorized Service Center at: support@audioengineusa.com. We will do everything we can to answer your questions and resolve any issues in 24 hours or sooner. We sincerely hope you get as much enjoyment from our products as we've had creating them.

Exclusive Remedy

This Limited Warranty is fully transferable provided that the current owner furnishes the original proof of purchase. THE MAXIMUM LIABILITY OF AUDIOENGINE SHALL NOT EXCEED THE ACTUAL PURCHASE PRICE PAID BY YOU FOR THE PRODUCT. IN NO EVENT SHALL AUDIOENGINE BE LIABLE FOR SPECIAL, INCIDENTAL, CONSEQUENTIAL OR INDIRECT DAMAGES.

Product returns

Audition your Audioengine speakers for 30 days, risk free. Your satisfaction is guaranteed. Should you have a problem or are not happy with any Audioengine product, send us an email: support@audioengine.com.

Audioengine 5 General Specifications

Type: 2.0 bookshelf-style, powered speaker system

Power output: 45W RMS / 70W peak per channel (AES)

Inputs: 2 x 1/8" stereo mini-jack

Outputs: USB Type A (power charging only)

Main voltages: 115/230V, 50/60Hz switchable

Amplifier type: Dual Class AB monolithic

Signal-to-noise: >95dB (typical A-weighted)

THD: <0.05% at all power settings

Crosstalk: <50db

Frequency response: 60Hz-22kHz +/-1.5dB

Input impedance: 10K ohms unbalanced

Protection: Output current limiting, thermal over-temperature, power on/off transient protection

Size (each): 10.0"(H) x 7.0" (W) x 7.75" (D)

Weight: 6.4Kg/14lbs (left), 4Kg/9lbs (right)

Shipping weight: 12.6Kg/27.75lbs per pair

Shipping box dims: 11.5" (W) x 14.5" (H) x 21.75" (L)

Materials and Construction

- 1" thick MDF cabinets
- 5" Kevlar woofers with advanced voice coils
- 20mm silk dome tweeters with neodymium magnets
- Torroidal power transformers

Company Information

Audioengine designs and builds innovative speaker systems with digital audio in mind. Great sound, simple designs, high-quality materials, and truly useful features are what Audioengine is all about. Awesome sound and clever features are the focal points of our products. For more information go to: www.audioengineusa.com



© 2006-2007 Audioengine, Ltd. All Rights Reserved.
Audioengine, Audioengine 5, and Combo Port are trademarks of Audioengine Corp.,
iPod, Airport Express, and Universal Dock are trademarks of Apple Computer, Inc.



© 2006-2007 Audioengine, Ltd. All Rights Reserved.
Audioengine, Audioengine 5, and Combo Port are trademarks of Audioengine Corp.,
iPod, Airport Express, and Universal Dock are trademarks of Apple Computer, Inc.